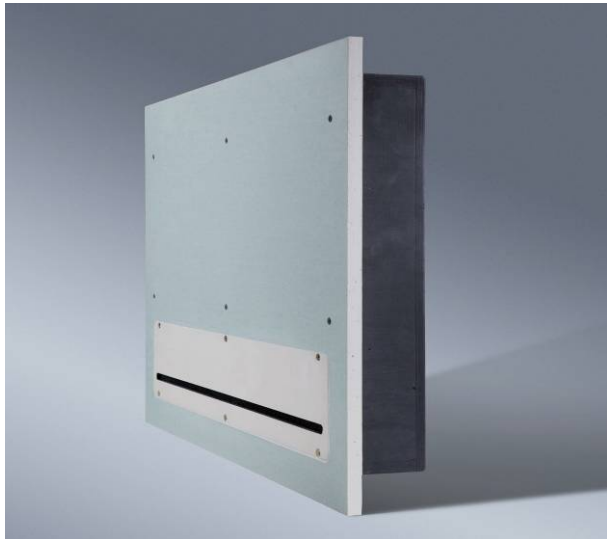


# Novasonar Boxer 50-2 / Technical datasheet



The Novasonar Boxer 50-2 Subwoofer is especially designed for drywall installations which always demand the performance of a vibration-free design.

This subwoofer loudspeaker constructed for direct integration in the drywall comprises, on the front, a commercial gypsum plaster board and, on the back, a stable multiplex housing, in which the loudspeaker chassis are mounted.

The Novasonar Boxer 50-2 is the ideal subwoofer extension for all Novasonar flat-panel loudspeakers. It can be directly screwed to the substructure of the drywalls or ceilings without any difficulties and without any additional retaining brackets, and can then be smoothed flush with it.

The special ML Boxer technology means there are almost no vibrations on the loudspeaker housing. It is therefore not necessary to decouple the loudspeaker from the drywall construction because of distracting structure-borne vibrations.

The sound outlet in the form of a very narrow slot is located on the periphery of the loudspeaker front and can thus be positioned unobtrusively just above the skirting board or on the ceiling edge.

## Versions and options.

Front: Gypsum plaster board (12,5 mm thickness), different materials on demand.

<b>DIMENSIONS (HxWxD)</b>	500 mm x 625 mm x 12,5 (86) mm
<b>WEIGHT</b>	9 kg
<b>FREQUENCY RESPONSE</b>	38 Hz – 200 Hz
<b>POWER HANDLING</b>	100 watt RMS
<b>SENSITIVITY</b>	82 dB 1 watt / 1 meter
<b>IMPEDANCE</b>	4 Ohms
<b>CONNECTION</b>	Standard cable
<b>DESIGN</b>	Gypsum plaster board

## A & E Specifications

### Description:

Subwoofer system on the ML Boxer principle for flush and seamless drywall mounting. The front of the subwoofer system comprises a gypsum plaster board screwed directly to the already existing drywall substructure. Special mounting material is not necessary. The front of the subwoofer and the transition of the wall or ceiling covering can be filled and smoothed with a conventional gypsum fibre filler for filling the joints to make them flush.

Worked into the front is a sound outlet in the form of a 10 mm narrow slot that runs along the loudspeaker front at a distance of some 75 mm. This enables the sound outlet to be positioned, for example, just above the skirting board or on the ceiling edge.

The very small installation depth of 73 mm on the back enables installation in a 75 mm deep substructure. Through the special configuration of the loudspeaker chassis on the ML Boxer principle there are hardly any distracting structure-borne vibrations on the loudspeaker housing. This is why it is not necessary to decouple the subwoofer from the surrounding drywall construction.

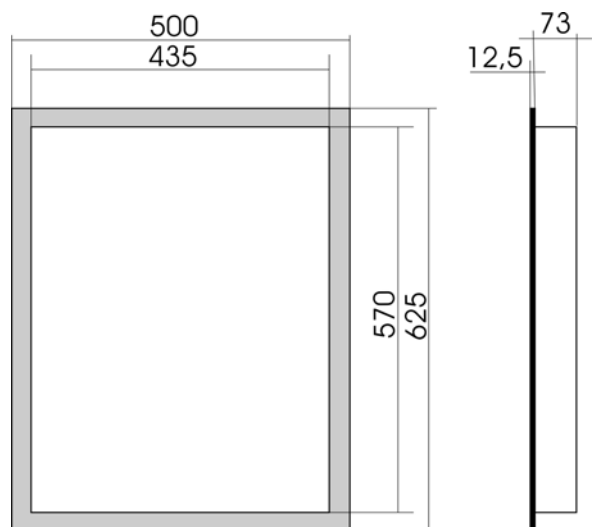
Dimensions: 500 mm x 625 mm x 12,5 (86) mm

Frequency response: 38 Hz – 200 Hz

Power handling : 100 watts RMS / 8 ohms  
Sensitivity: 82 dB (1 w / 1m)  
Max. SPL: 100 dB (1 m)

DSP settings: 1 x Hp, 1 x Lp and  
1 x parametric EQ

Manufacturer: ML Audio+Carbons  
Model: Novasonar Boxer 50-2



All products subject to technical modification without prior notice. Errors excepted.