

User Manual

airCUE-8X10

airCUE-6X10

Version 01

CUE, a.s., K Nouzovu 6, 143 00 Praha 4, Czech Republic
phone: +420 241 091 240
fax: +420 241 432 446
www.cuesystem.com
mail: info@cuesystem.com

cue

User Manual airCUE-8X10, airCUE-6X10

UM030_01, 1.6.2007

Copyright © CUE, a.s., Praha, Czech Republic 1990 - 2007.

All rights reserved. Specifications are subject to change without prior notice.

1. Table of Contents

1. Table of Contents	3
2. Introduction	4
2.1. Overview	4
2.2. airCUE-8X10 Models & Available Accessories.....	4
2.3. airCUE-6X10 Models & Available Accessories.....	4
2.4. Features	5
2.5. Programming.....	5
3. Box Contents	6
4. Specifications	7
5. Physical Description	8
5.1. Front Panel.....	8
5.2. Top Panel.....	10
5.3. Rear Panel	11
5.4. Bottom Panel.....	12
6. Setup and Using	13
6.1. Switch On / Off	13
6.2. Charging.....	13
6.3. PC Connection	14
6.4. Access Admin Web Server.....	16
6.5. Wireless Communication Settings.....	16
6.6. Download User Application	17
6.7. On Screen Display	18
7. Cleaning the Touch Panel	21
8. Factory Default Setting	22
9. Software and Firmware License	23
10. Warranty Conditions	24
11. CE Declaration of Conformity	25
12. FCC	26

2. Introduction

2.1. Overview

The airCUE-8X10 and airCUE-6X10 and are superior touch panels cater to the full integration of lifestyle as well as work style. It combines functionality such as multimedia integration, lighting automation, security monitoring, entertainment integration, and meeting & presentation control. Unleashed by Wi-Fi this classical beauty gives professional presenters and homeowners the wireless freedom that they love. From living room to garden, boardroom to break-room, anywhere there is wireless LAN, both models put them in control and keep them connected to the world. The long battery life and quick charger keep them wireless with fewer pit stops. The active matrix touch screen display offers resolution 800 x 600 pixels (airCUE-8X10) or 640 x 480 pixels (airCUE-6X10) and it produces stunning high color images. Innovative design features like 256 MB of standard data storage provides a level of capability not available with other similar touch panels. Wired Ethernet connection provides easy network integration. Fully compatible with CUE controllers, this touch panel provides the ultimate one-touch solution for meeting rooms, conference rooms, boardrooms and high-tech homes. Flexible tabletop or wall installation can be done using four types of accessories.

2.2. airCUE-8X10 Models & Available Accessories

Model	Stainless steel enclosure	Wooden enclosure, white birch	Wooden enclosure, oak	Wooden enclosure, mahogany	Plastic enclosure, stardust black	Plastic enclosure, abrasive white
airCUE-8X10	-	CS0300-001	CS0300-002	CS0300-003	CS0300-004	CS0300-005
airCUE-8X10 Tabletop Docking Station	-	CS0301-001	CS0301-002	CS0301-003	CS0301-004	CS0301-005
airCUE-8X10 Wall Docking Station	-	CS0302-001	CS0302-002	CS0302-003	CS0302-004	CS0302-005
airCUE-8X10 Tabletop Stand	CS0303-001	-	-	-	-	-
airCUE-8X10 Wall Mounting Adapter	CS0304-001	-	-	-	-	-

2.3. airCUE-6X10 Models & Available Accessories

Model	Stainless steel enclosure	Wooden enclosure, white birch	Wooden enclosure, oak	Wooden enclosure, mahogany	Plastic enclosure, stardust black	Plastic enclosure, abrasive white
airCUE-6X10	-	CS0305-001	CS0305-002	CS0305-003	CS0305-004	CS0305-005
airCUE-6X10 Tabletop Docking Station	-	CS0306-001	CS0306-002	CS0306-003	CS0306-004	CS0306-005
airCUE-6X10 Wall Docking Station	-	CS0307-001	CS0307-002	CS0307-003	CS0307-004	CS0307-005
airCUE-6X10 Tabletop Stand	CS0308-001	-	-	-	-	-
airCUE-6X10 Wall Mounting Adapter	CS0309-001	-	-	-	-	-

2.4. Features

The main features of the unit are

- Display
 - airCUE-8X10: 8.4" active matrix touch screen display 800 x 600 pixels
 - airCUE-6X10: 6.4" active matrix touch screen display 640 x 480 pixels
- 802.11b/g Wi-Fi 2-way wireless communication
- Wired Ethernet connection
- Power over Ethernet (PoE) IEEE 802.3af compatible
- Battery charging from Power over Ethernet
- Four programmable buttons
- Web server and Admin Web pages for setup and diagnostics
- Built-in microphone and speaker
- Built-in light and motion sensors
- Internal Li-Ion rechargeable battery pack
- Wireless, wired tabletop and wired wall mounting usage
- Tabletop and wall docking stations for charging

2.5. Programming

The control application for airCUE is programmed using **Cue Director** programming tools.

3. Box Contents

Each airCUE comes with

1. Touch panel airCUE-8X10 or airCUE-6X10
2. Stylus
3. Ethernet cable straight-through
4. Ethernet cable crossed-over
5. CUEadapter /30W incl. power cable
6. Cleaning tissue
7. CE Declaration of Conformity, RoHS Declaration
8. Touch Panel Data Sheet
9. Cue System Connector Wiring Sheet
10. CUE Application CD

4. Specifications

Touch-screen display

Active matrix color LCD

Size and resolution

airCUE-8X10: 8.4" / 213 mm diagonal, 800 x 600 pixels

airCUE-6X10: 6.4" / 162 mm diagonal, 640 x 480 pixels

65 536 colors (High Color)

Aspect ratio 4:3

Resistive membrane touch overlay

Built-in sensors

Light sensor for automatic backlight dimming

Motion sensor for resume from display backlight saver mode

Buttons

Power, Reset / Set factory default, 4x programmable

LED indicators

Power

Blue indicates power on or power down mode

Green indicates external power supply

Red indicates charging of battery pack

Wi-Fi (yellow/green) indicates wireless network

Memory

128 MB RAM

CompactFlash Card min. 256 MB (upgradeable)

Software technologies

Admin Web, XPL Inside, WXL

Audio

Built-in microphone, built-in mono speaker

System communication

10/100 BaseT LAN, RJ-45 connector

Wireless network, IEEE 802.11b/g Wi-Fi 2.4 GHz

Power supply

24 VDC (+/- 20%), 13 W, power jack connector

Power over Ethernet (PoE), IEEE 802.3af compatible

Built-in Li-Ion rechargeable battery pack

Physical

Stainless steel – solid wood or plastic enclosure

Dimensions and weight

airCUE-8X10: 263 x 175 x 25 mm / 10.4" x 6.9" x 1.0", 1.5 kg / 3.3 lb

airCUE-6X10: 216 x 145 x 25 mm / 8.5" x 5.7" x 1.0", 1.2 kg / 2.7 lb

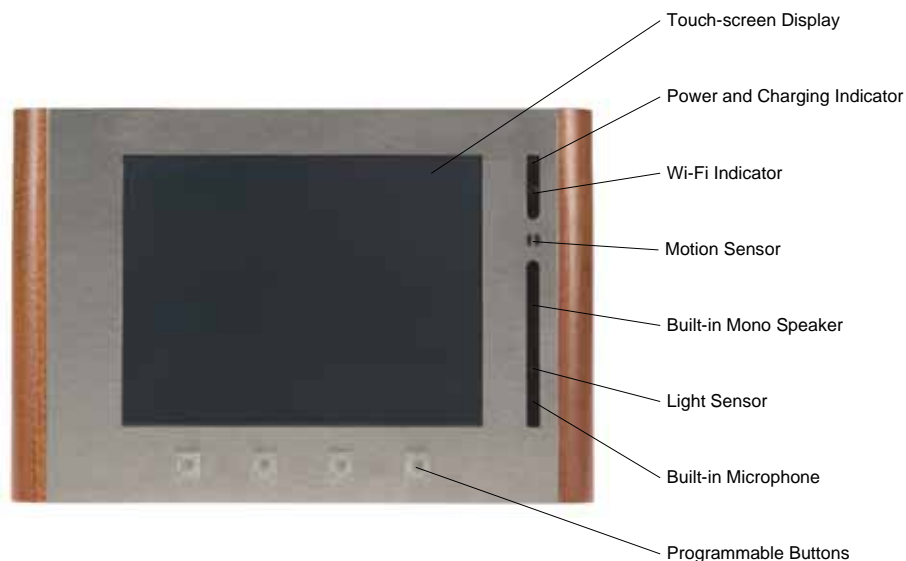
Operating environment

Temperature 10° to 40° C

Humidity 10% to 90% non-condensing

5. Physical Description

5.1. Front Panel



Touch-screen Display

Touch-screen display with active matrix color LCD and resistive membrane touch overlay.

Power and Charging Indicator

- Off**..... The device is off.
- Blue On** The device is switched on.
- Green On** External power supply is connected.
- Red On** Battery pack is being charged.

Wi-Fi Indicator

- Off**..... No Wi-Fi connection
- Green On** Wi-Fi connected, strong signal
- Yellow On** Wi-Fi connected, intermediate or weak signal

Motion Sensor

The Motion Sensor resumes airCUE from Backlight Saver mode.

Built-in Mono Speaker

The built-in mono speaker is prepared for future use. It is not supported by current firmware version.

Light Sensor

The Light Sensor automatically adjusts display backlight according ambient light level.

Built-in Microphone

The built-in microphone is prepared for future use. It is not supported by current firmware version.

Programmable Buttons

The airCUE is equipped with 4 programmable buttons numbered from left. Default button functions are as follows

- **Button 1** – On Screen Display show / hide
- **Button 2** – Arrow Left in On Screen Display
- **Button 3** – Arrow Right in On Screen Display
- **Button 4** – Enter in On Screen Display

5.2. Top Panel



Stylus

Use the stylus to tap or double tap on an application icon or to select items on the menu. The stylus is also used to type on the On Screen Display. Use of other pointers could damage our screen. When stylus is not used you can place it in the storage slot located on the top right corner of airCUE.

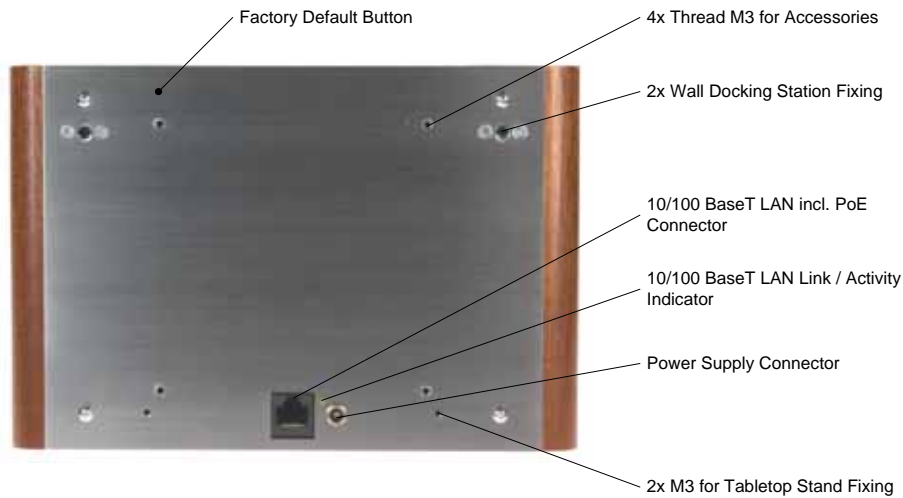
Power Button

The button Power is used to switch the device between on and power down modes.

Power Supply Connector

This connector allows you to connect airCUE to the external power with the supplied AC adapter. It is used for charging of the battery without docking station. Not implemented in airCUE-8X10.

5.3. Rear Panel



Power Supply Connector

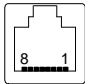
This connector allows you to connect airCUE to the external power with the supplied AC adapter. It is used for charging of the battery without docking station.

10/100 BaseT LAN incl. PoE Connector

The 10/100 BaseT LAN is a standard network connection 10/100 BaseT LAN using RJ-45 connector. There is no auto sense, which means it does not recognize straight through cable to cross-over cable. For the direct PC connection it is necessary to use cross-over cable; for the connection to Ethernet switch straight through cable. The length of the Ethernet cable connecting touch panel to the network must not exceed 100 meters.

Power over Ethernet (PoE) is fully compatible with IEEE 802.3a standard. PoE integrates data and power on the same wires. It keeps the structured cabling safe and does not interfere with concurrent network operation. PoE delivers 48 V of DC power over unshielded twisted-pair wiring for terminals consuming less than 13 watts of power. **PoE needs 802.3a compatible Ethernet switches currently available by most leading network equipment vendors.**

Connector pin out

CUEnet (LAN)			
RJ-45	Pin	Signal	Cat5 Cable Color
	1	TX_D1+ and PoE	White / Orange
	2	TX_D1- and PoE	Orange
	3	RX_D2+ and PoE	White / Green
	4	PoE +/- 48 V	Blue
	5		White / Blue
	6	RX-D2- and PoE	Green
	7	PoE Common	White / Brown
	8		Brown

Factory Default Button

This button carries two functions

1. When pressed shortly (< 2 seconds) the **reset** of the unit is performed followed by operating system boot taking approx. 13 seconds.
2. When pressed longer for approx. 5 seconds the **factory default** function is performed. For factory default values please see chapter Factory Default Setting.

5.4. Bottom Panel



6. Setup and Using

6.1. Switch On / Off

The airCUE can be switched on / off by button Power Button located on top panel. The power mode is indicated by Power and Charging indicator located on the front panel.

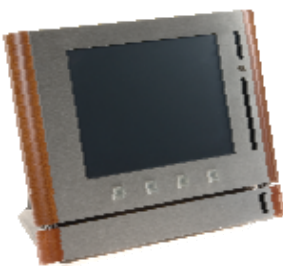
Current Mode \ Target Mode	Switch On	Power Down Mode	Switch Off
Switch Off Indication: no	Power Button short press	x	x
Switch On Indication: blue LED on, display backlight on	x	Power Button short press	Press Power Button until display backlight goes off (approx. 2 seconds)
Power Down Mode Indication: blue LED on	Power Button short press	x	Press Power Button until blue LED starts to flash

6.2. Charging

External Power Supply

For battery charging touch panel requires power from an external power supply. The standard CUEadapter /30W is delivered with the unit. Attach the power jack connector of the power supply unit to the power supply connector located on the bottom panel of airCUE and attach power cable to a power outlet. The green indicator will light when external power supply is connected and red indicator will light when battery is charging.

Docking Station



Tabletop Docking Station or Wall Docking Station can be used for charging. Both docking stations are available and have to be ordered separately.

Docking station is powered by CUEadapter /30W delivered with the airCUE. Attach the power jack connector of the power supply unit to the power supply connector located on the bottom panel of docking station and attach power cable to a power outlet.

Indicators located on the front panel of docking station indicate as follows

- Green indicator will light when external power supply is connected to docking station.
- Red indicator will light when airCUE is placed in docking station correctly.

Power Over Ethernet (PoE)

Touch panel battery is automatically charged if PoE is applied. Be sure charging time is longer against charging from external power supply.

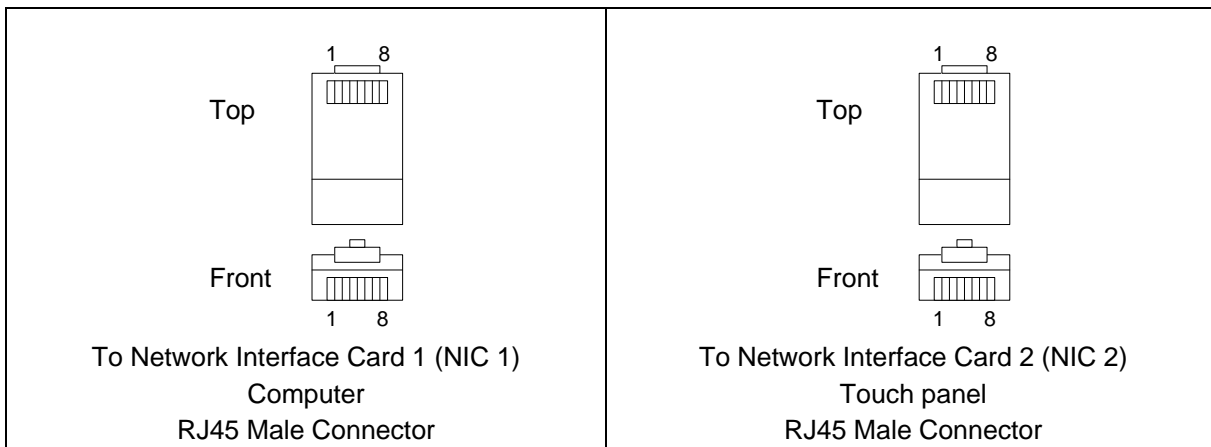
6.3. PC Connection

Using LAN Directly to PC

Attach one end of an RJ-45 Ethernet **crossed-over cable** to the touch panel CUenet (LAN) port and attach the other end of the RJ-45 Ethernet cable to your computer.

Ethernet Crossed-Over Cable

This cable can be used to cascade hubs, or for connecting two Ethernet stations back-to-back without a hub. It works with 10Base-T, 100Base-TX, 100Base-T4 and 1000Base-T. Use a good enough cable, if you are confused about categories of cables then use Category 5 (enhanced) and you'll be fine even at 1000Base-T.



Name	NIC 1	Color	NIC 2	Name
TX+ (BI_DA+)	1	White/Orange	3	RX+ (BI_DB+)
TX- (BI_DA-)	2	Orange	6	RX- (BI_DB-)
RX+ (BI_DB+)	3	White/Green	1	TX+ (BI_DA+)
- (BI_DC+)	4	Blue	7	- (BI_DD+)
- (BI_DC-)	5	White/Blue	8	- (BI_DD-)
RX- (BI_DB-)	6	Green	2	TX- (BI_DA-)
- (BI_DD+)	7	White/Brown	4	- (BI_DC+)
- (BI_DD-)	8	Brown	5	- (BI_DC-)

That means that the White/Orange cable connected to NIC 1 pin 1 should go to NIC 2 pin 3 and NIC 1 pin 2 to NIC 2 pin 6 etc.

Notes

1. 1000Base-T names are in parentheses.
2. It's important that each pair is kept as a pair. TX+ & TX- must be in the pair and RX+ & RX- must together in another pair. Just as the table above shows.
3. While 10Base-T and 100Base-TX only uses 2 pairs, please connect all four since 100Base-T4 and 1000Base-T needs them and save you some future debugging.
4. The colors originate from the numbering and name on NIC 1.
5. The connection is based on IEEE Standard 802.3, 2000 Edition.

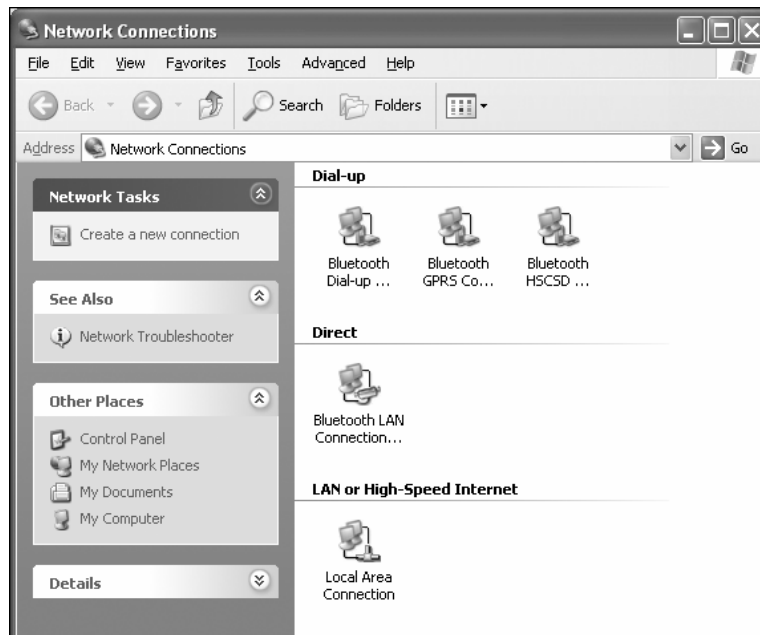
Using LAN Network

Attach one end of an RJ-45 Ethernet **straight-through cable** to the touch panel CUEnet (LAN) port and attach the other end of the RJ-45 Ethernet cable to your computer.

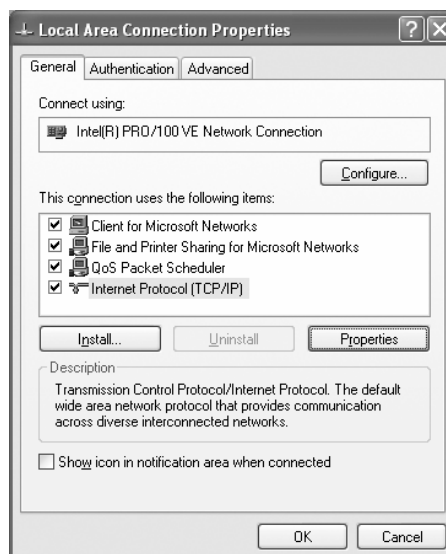
Windows XP Local Area Connection Settings

Steps are

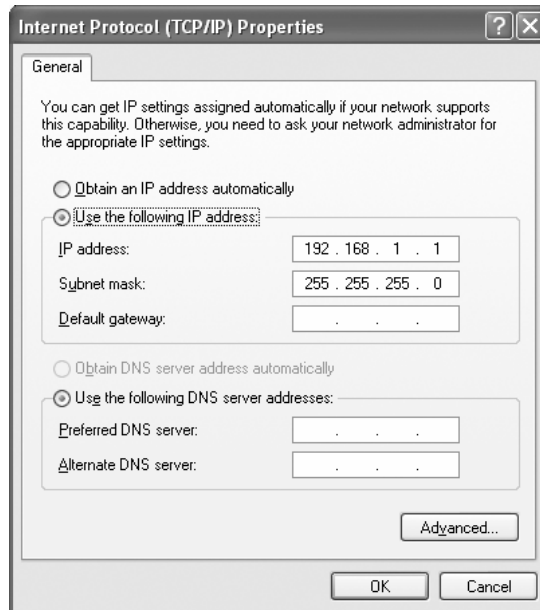
1. Start Windows XP.
2. Click Start, then click Control Panel choose the option to switch to Classic View.
3. Double-click Network Connections, select the Local Area Connection and then right-click and select Properties.



4. Select Internet Protocol (TCP/IP) and click Properties button.



5. Select Use the following IP address option. Set IP address to 192.168.1.1 (or other address different from 192.168.1.127) and Subnet mask to 255.255.255.0. Leave other options unchanged and click OK.



6.4. Access Admin Web Server

Run the Internet browser on your PC and type in the touch panel factory default IP address **192.168.1.128**. The Admin login web page will be displayed. The password is set to default.

6.5. Wireless Communication Settings

Please use Admin Web for Wi-Fi settings.

Note: In case of troubles please see application note **Configuration of More Overlapping WiFi Networks**, which is stored on delivered CUE Application CD or can be downloaded from www.cuesystem.com, section Products / Product Documentation / Application Notes (http://www.cuesystem.com/application_notes.aspx).

6.6. Download User Application

Overview

User control application is dedicated to control and it is programmed by Cue Director programming tools. It is composed of elements for AV, lighting, heating, and air conditioning control etc. based on the actual application.

Using Cue Director XPL

Steps are

1. Connect touch panel to your computer as described in chapter PC Connection.
2. Switch on the touch panel.
3. Run Cue Director XPL.
4. Open Cue System Workspace (CSW) file with Cue Director XPL. It's necessary to have appropriated touch panel properly inserted and configured.
5. Right-click on airCUE-xxx Layout and select "Download layout...".

Using Admin Web

Steps are

1. Connect touch panel to your computer as described in chapter PC Connection.
2. Switch on the touch panel.
3. Run Cue Director XPL.
4. Open Cue System Workspace (CSW) file with Cue Director XPL. It's necessary to have appropriated touch panel properly inserted and configured.
5. Right-click on airCUE-xxx Layout and select "Export to WDF file..." and type name of exported file.
6. Start your web browser and open airCUE web pages (for default IP settings open <http://192.168.1.128> page).
7. Go to Application page, browse your WDF file and upload it (see more in section Settings – Applications page).

6.7. On Screen Display

Access

On Screen Display is activated by front panel left most button.

Startup Menu



The Startup Menu is activated if no application is running.

Run downloaded application by button Application.

Launch On Screen Display by button On Screen Display.

Screen



Backlight Saver will switch off automatically the display backlight off to conserve battery power and fluorescent tubes lifetime.

Power Down mode will be reached automatically if enabled. By decreasing time you can set disabled.

LCD Backlight sets display backlight level.

If Adaptive Brightness is switched to Yes the Light Sensor automatically adjusts display backlight according ambient light level.

If Motion Sensor is switched to Yes the Motion Sensor resumes airCUE from Backlight Saver mode automatically.

Status



This page shows current status of the touch panel.

IP Settings



This page is used for setting the communication parameters for your touch panel. The airCUE uses standard internet protocol (IP) communication parameters. Certain parameters can be reset by the user. On start up, this page will display current IP address. Carefully note this addressing information (and any changes you elect to make to the IP address, subnet mask, or default gateway). This information must be entered into the CUE System Director® program written for your specific application. For control systems with more than one unit, a unique IP address must be given to each CUE device.

For setting please select appropriate field and use numeric keypad. Be sure to click the Apply button for any changes to the IP settings to become effective.

Note: The Ethernet connector has to be plugged in prior switching from Wi-Fi to LAN.

Applications



This screen is used for selection; start and stop of uploaded applications (touch panel layouts). All uploaded applications are listed on this page.

A “running flag” denotes the active application. The running application can be stopped via the **Stop** button.

Files are uploaded from a personal computer to the touch panel using CUE System Director software or using Admin Web.

Calibration



Use this page for calibration. We recommend use stylus.

Battery



This page shows current battery status and it's charging modes. The type of external power source is indicated too.

Exit



Closes the On Screen Display.

7. Cleaning the Touch Panel

You should clean the touch panel screen overlay after each day's use.

Materials required are

1. Two clean, soft texture cloths (cotton).
2. Spray bottle of cleaning solution without alcohol (window cleaner).
3. Stainless steel parts should be cleaned using a special cleaning solution, for example 3M Stainless Steel Cleaner & Polish, SS9100 2648 3.

Steps are

1. Turn the touch panel off.
2. Spray a small amount of the cleaning solution onto one of the cloths.
3. Clean the touch panel overlay with the damp cloth.
4. Wipe the touch panel overlay with the dry cloth.

8. Factory Default Setting

The airCUE is configured as follows

Identification

Name Empty

Internet Clock..... Empty

Date and Time

Time zone GMT + 0

Date and time Unchanged

IP Connection

Host name Empty

IP address..... 192.168.1.128

Subnet mask..... 255.255.255.0

Default gateway Empty

DNS Empty

Applications Unchanged, stopped

Firmware..... Unchanged

Password..... Set to empty

Other settings are cleared (see Admin web).

Saved applications and files are not deleted.

9. Software and Firmware License

END-USER NOTICE AND LICENSE AGREEMENT FROM CUE, a.s.

NOTICE TO END-USER: CAREFULLY READ THE FOLLOWING LEGAL AGREEMENT (THIS "LICENSE"). INSTALLATION OR USE OF THE ENCLOSED CUE, a.s. SOFTWARE PROGRAMS (COLLECTIVELY, "SOFTWARE") ON YOUR COMPUTER SYSTEMS OR HARDWARE DEVICES CONSTITUTES YOUR ACCEPTANCE OF THESE TERMS. IF YOU DO NOT AGREE TO THE TERMS OF THIS LICENSE, PROMPTLY DELETE THE SOFTWARE FROM YOUR COMPUTER SYSTEMS AND HARDWARE DEVICES, DESTROY ANY COPIES YOU MADE OF THE SOFTWARE OR ANY INSTALLATION MEDIA OF THE SOFTWARE INCLUDED WITH YOUR SYSTEM, AND DISPOSE OF ALL WRITTEN MATERIALS IN YOUR POSSESSION REGARDING THE SOFTWARE.

License Grant: CUE grants to You, as an individual, a license to install and use one (1) copy of the Software on a single computer at a time; provided, however, that You may make copies of the Software solely for Your development of applications for CUE hardware and demonstration versions of such applications. Any applications created with the Software may only be used with Cue hardware. Your license to use the Software is conditioned upon Your compliance with the terms of this License. A License is required for each end-user of the Software. A license is required for each installation of the Software. You may make one (1) copy of the Software for archival purposes only. You may use this Software only in connection with CUE hardware. You must have acquired the Software directly in connection with the purchase of CUE hardware from CUE or from a CUE approved reseller for this license to be effective. If You have purchased a Site License, You may complete only the number of installations specified in the License Agreement accompanying the Software.

Copyright: The Software and software built into CUE hardware ("Firmware") are protected by copyright law and international treaty provisions. You acknowledge that no title to the intellectual property in the Software and Firmware is transferred to You. You further acknowledge that title and full ownership rights to the Software and Firmware will remain the exclusive property of CUE, and You will not acquire any rights to the Software and Firmware except as expressly set forth in this License. You agree that any copies of the Software will contain the same proprietary notices which appear on and in the Software.

Prohibited Uses: Without obtaining prior written permission from CUE, You may not (a.) use, copy, modify, alter, or transfer the Software or documentation except as expressly provided in this License; (b.) translate, disassemble, decompile, reverse program or otherwise reverse engineer the Software and Firmware; (c.) sublicense or lease the Software or its documentation (d.) use this Software with any hardware other than products produced by CUE or in connection with applications being developed for CUE hardware; or (e.) use the Software in a multi-user, network, or multiple computer environment or in a rental, time sharing or computer service business. Without prejudice to any other rights, CUE may terminate this License if You fail to comply with its terms and conditions. In such event, You must immediately destroy all copies of the Software.

No Other Warranties: CUE DOES NOT WARRANT THAT THE SOFTWARE AND FIRMWARE IS ERROR FREE. CUE DISCLAIMS ALL WARRANTIES WITH RESPECT TO THE SOFTWARE AND FIRMWARE, EITHER EXPRESS OR IMPLIED, INCLUDING BUT NOT LIMITED TO IMPLIED WARRANTIES OF MERCHANTABILITY, FITNESS FOR A PARTICULAR PURPOSE AND NONINFRINGEMENT OF THIRD PARTY RIGHTS. SOME JURISDICTIONS DO NOT ALLOW THE EXCLUSION OF IMPLIED WARRANTIES OR LIMITATIONS OF HOW LONG AN IMPLIED WARRANTY MAY LAST, OR THE EXCLUSION OF LIMITATION OF INCIDENTAL DAMAGES, SO THE ABOVE LIMITATIONS OR EXCLUSIONS MAY NOT APPLY TO YOU. THIS WARRANTY GIVES YOU SPECIFIC LEGAL RIGHTS AND YOU MAY ALSO HAVE OTHER RIGHTS WHICH VARY FROM JURISDICTION TO JURISDICTION.

No Liability for Consequential Damages: IN NO EVENT SHALL CUE BE LIABLE TO YOU FOR ANY CONSEQUENTIAL, SPECIAL, INCIDENTAL, OR INDIRECT DAMAGES OF ANY KIND ARISING OUT OF THE PERFORMANCE OR USE OF THE SOFTWARE, EVEN IF CUE HAS BEEN ADVISED OF THE POSSIBILITY OF SUCH DAMAGES.

Label on Hardware: Use of this hardware and the software programs controlling this hardware is subject to the terms of the Software and Hardware License Agreements (the "License Agreements"). You should not use the software and hardware until you have read the License Agreements. By using the software and hardware, you signify that you have read the Licenses Agreements and accept their terms. The "License Agreement" is available at www.cuesystem.com.

Trademark Notice: CUE and the CUE logo are trademarks of CUE, a.s. in the United States and in other countries.

10. Warranty Conditions

Warranty Duration

CUE, a.s. provides warranty for all CUE products for a period of 3 years from the day of purchase. The provided warranty for touch screens is 2 years from the day of purchase. CUE accepts reclamation of 5 not properly working dots and more (2 dots join – 1 counts). The warranty provided for rechargeable accumulators is 6 months from the day of purchase

Liability

CUE is not liable for any consequential damage caused by CUE products including any loss of profits, incidental or consequential damages or any claims made by a third parties.

General Warranty Terms

- a) CUE warrants that its products are without defects in material and are fully functional for the duration of the warranty.
- b) Warranty repairs are free of charge. The customer will send the damaged device to CUE at his cost.
- c) All warranty repairs and after warranty services are made at CUE premises. It is strictly prohibited to repair CUE products or to change any accessory parts, except those parts with limited service life. CUE is not liable for consumables or parts with limited service life (lamps, batteries etc.)
- d) The warranty further does not apply to the following cases
 - Damages caused by operating the system not according to the conditions defined in user manual or instruction (wrong power supply voltage, operation outside deferred temperature range, operation in humid environment and mechanical damages).
 - Damages caused by faulty service, maintenance, connection, and use of other than original connection cable.
 - Damage caused by agencies i.e. incidental or unpredictable impacts (fire, earthquake, flood, thunder, strong electric induction, water, strong wind, theft, vandalism etc.)

After Warranty Services

- a) All warranty repairs are normally on a 'back to base' basis, as defined in 3 c)
- b) All out warranty repair costs will be fully charged to the customer.
- c) In cases where our staff are called out to assist, cost of transport and time will be at customer cost

11. CE Declaration of Conformity



CE Declaration of Conformity

We, the producer **CUE, a.s.**, K Nouzovu 6, Praha 4, Czech Republic acknowledge our sole responsibility, that the product including accessories

Kind of equipment: Remote Control System

Type designation
(in alphabetical order)

Product Name	Product Code
airCUE-6X10	CS0300-001 to CS0300-005
airCUE-6X10 Tabletop Docking Station	CS0301-001 to CS0301-005
airCUE-6X10 Tabletop Stand	CS0303-001
airCUE-6X10 Wall Docking Station	CS0302-001 to CS0302-005
airCUE-6X10 Wall Mounting Adapter	CS0304-001
airCUE-8X10	CS0305-001 to CS0305-005
airCUE-8X10 Tabletop Docking Station	CS0306-001 to CS0306-005
airCUE-8X10 Tabletop Stand	CS0308-001
airCUE-8X10 Wall Docking Station	CS0307-001 to CS0307-005
airCUE-8X10 Wall Mounting Adapter	CS0309-001
airCUE-XM8	CS0254-W, CS0254-O, CS0254-M
airCUE-XM8 Docking Station	CS0260-W, CS0260-O, CS0260-M
analogCUE	CS0004
auxCUE	CS0005
CUEadapter /30W	CS0292-001 to CS0292-003
CUEadapter /65W	CS0293-001 to CS0293-003
CUEwire Converter 232/422/485	CS0233
eCUE	CS0173
inputCUE	CS0191
IpCUE-alpha	CS0251
IpCUE-beta	CS0252
IpCUE-delta	CS0267
IpCUE-epsilon	CS0268
IpCUE-gamma	CS0253
IpCUE Rack Mounting Kit	CS0251-MR
IR Adapter /I	CS0256
IrCUE 99	CS0149-WA, CS0149-OA, CS0149-MA
IrCUE Receiver 485	CS0169-C
keyboardCUE-S	CS0174-W, CS0174-O, CS0174-M
keyboardCUE 99	CS0145-W, CS0145-O, CS0145-M
keypadCUE-1G	CS0221
keypadCUE-2G	CS0222
keypadCUE-3G	CS0223
monitorCUE	CS0203-W, CS0203-O, CS0203-M
Opto-Input Adapter /I	CS0257
PEA208	CS0225-1, CS0225-2
PEC25	CS0163
PED108	CS0164-1, CS0164-2
PED202	CS0165-1, CS0165-2
PEF150	CS0249-1, CS0249-2
PEF200	CS0166-1, CS0166-2
PER610	CS0167-1, CS0167-2
PES03	CS0168
PET102	CS0244-1, CS0244-2

Product Name	Product Code
PET105	CS0245-1, CS0245-2
powerAUX	CS0016
rfbaseCUE	CS0171-4, CS0171-8, CS0171-9
rFCUE 99	CS0170-*4A, CS0170-*8A, CS0170-*9A
Rx Ext	CS0319.401
Rx1 DIN /Data Receiver	CS0318.401
sbiCUE-DMX	CS0201
sensorCUE	CS0265
smartCUE	CS0008-R, CS0008-M
soundCUE	CS0009
touchCUE-L	CS0236
touchCUE-L /b	CS0238
touchCUE-L /b Back Box	CS0238-MB
touchCUE-L /b Rack Mount Panel	CS0238-MR
touchCUE-LV	CS0236-V
touchCUE-LV /b	CS0238-V
touchCUE-LV 99	CS0234-W-V, S0234-O-V, CS0234-M-V
touchCUE-M	CS0237
touchCUE-M /b	CS0239
touchCUE-M /b Back Box	CS0239-MB
touchCUE-M /b Rack Mount Panel	CS0239-MR
touchCUE-MV	CS0237-V
touchCUE-MV /b	CS0239-V
touchCUE-MV 99	CS0235-W-V, CS0235-O-V, CS0235-M-V
touchCUE-S	CS0247
touchCUE-S /b	CS0241
touchCUE-S /b Back Box	CS0241-MB
touchCUE-S /b Rack Mount Panel	CS0241-MR
touchCUE-S 99	CS0248-W, CS0248-O, CS0248-M
touchCUE-SRF	CS0188-4, CS0188-8, CS0188-9
touchCUE-SX /b	CS0266
touchCUE-SX /b Back Box	CS0266-MB
touchCUE-SX /b Rack Mount Panel	CS0266-MR
touchCUE-V /I	CS0190
touchCUE-XLV 99	CS0261-W-V, CS0261-O-V, CS0261-M-V
Tx Cross 4	CS0317.401
Tx Element 2	CS0312.401 to CS0312.424
Tx Element 4	CS0313.401 to CS0313.424
Tx Key	CS0316.401
Tx Pocket 1	CS0314.401
Tx Pocket 4	CS0315.401
Tx Time 2	CS0310.401 to CS0310.434
Tx Time 4	CS0311.401 to CS0311.434
Universal Serial Cable Adapter	CS0271

in accordance with EMC Directive 89/336/EEC,
is in compliance with the following norms or documents:

EN50082-1 (IEC801-2), IEC65(CO)39, DIN VDE 0839 part 82-1, DIN VDE 0843 part 4, IEC801-4, EN50081-1, EN55022 class B, DIN VDE 0839 part 81-1, EN55014, EN55011.

28.5.2007

Jaroslav Dibitanzl
Member of Board of Directors

12. FCC



Caution

Changes or modifications to this unit not expressly approved by the party responsible for compliance could void the user's authority to operate the equipment.

Note

This equipment has been tested and found to comply with the limits for a Class B digital device, pursuant to Part 15 of the FCC Rules. These limits are designed to provide reasonable protection against harmful interference in a residential installation. This equipment generates, uses and can radiate radio frequency energy and, if not installed and used in accordance with the instructions, may cause harmful interference to radio communications. However, there is no guarantee that interference will not occur in a particular installation. If this equipment does cause harmful interference to radio or television reception, which can be determined by turning the equipment off and on, the user is encouraged to try to correct the interference by one or more of the following measures:

- Reorient or relocate the receiving antenna.
- Increase the separation between the equipment and receiver.
- Connect the equipment into an outlet on a circuit different from that to which the receiver is connected.
- Consult the dealer or an experienced radio / TV technician for help.

