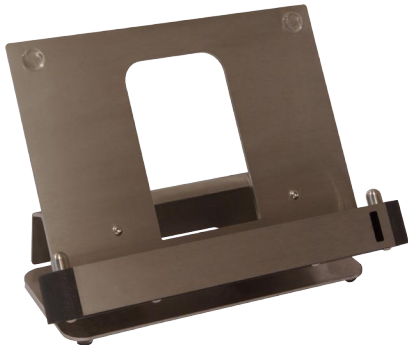


## airCUE-6X10 Tabletop Docking Station

The airCUE-6X10 Tabletop Docking Station is an optional accessories for airCUE-6X10. It combines wireless handheld usage and tabletop usage of this panel. Insert the wireless touch panel into the tabletop docking station and charge battery. At the same time the docking station creates the right viewing angle for tabletop usage of the touch panel. Power to the docking station is provided by standard power supply delivered with touch panel.








### Power supply

24 VDC (+/- 20%), 2-pin 3.5 mm connector

### Physical

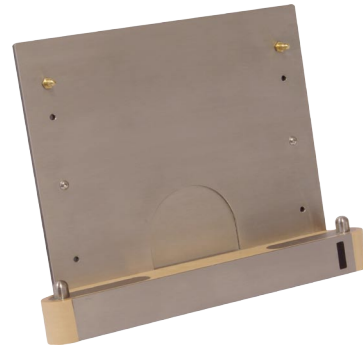
Stainless steel – wood or stainless steel – plastic enclosure  
 Dimensions 216 x 147 x 108 mm / 8.5" x 5.8" x 4.3"  
 Weight 1.1 kg / 2.4 lb

### Product codes

CS0306-001	wooden enclosure, white birch	
CS0306-002	wooden enclosure, oak	
CS0306-003	wooden enclosure, mahogany	
CS0306-004	plastic enclosure, stardust black	
CS0306-005	plastic enclosure, abrasive white	

## airCUE-6X10 Wall Docking Station

The airCUE-6X10 Wall Docking Station is an optional accessories for airCUE-6X10. It combines wireless handheld usage and wall usage of this panel. Put the wireless touch panel into the wall docking station and charge battery. At the same time the touch panel can be used as wall installed device. Power to the docking station is provided by standard power supply delivered with touch panel. The wall docking station is compatible with standard electrical wall boxes and it doesn't require installation of a special back box into the wall.








### Power supply

24 VDC (+/- 20%), 2-pin 3.5 mm connector

### Physical

Stainless steel – wood or stainless steel – plastic enclosure  
 Dimensions 216 x 173 x 37 mm / 8.5" x 6.8" x 1.5"  
 Weight 1.4 kg / 3.1 lb

### Product codes

CS0307-001	wooden enclosure, white birch	
CS0307-002	wooden enclosure, oak	
CS0307-003	wooden enclosure, mahogany	
CS0307-004	plastic enclosure, stardust black	
CS0307-005	plastic enclosure, abrasive white	

## airCUE-6X10 Tabletop Stand

The airCUE-6X10 Tabletop Stand is an optional accessories for airCUE-6X10. Simply attach tabletop stand to the rear panel and use airCUE-6X10 as tabletop device. Tabletop stand creates the right viewing angle for tabletop usage. The touch panel can be used as wired device connected to Ethernet and power supply or it can be used as wireless panel.



### Physical

Stainless steel enclosure  
 Dimensions 187 x 64 x 85 mm / 7.4" x 2.5" x 3.3"  
 Weight 0.5 kg / 1.1 lb

### Product code

CS0308-001

## airCUE-6X10 Wall Mounting Adapter

The airCUE-6X10 Wall Mounting Adapter is optional accessories for airCUE-6X10. Simply fix this adapter onto the wall and use airCUE-6X10 as non-detachable wall mounting device. The wall mounting adapter is compatible with standard electrical wall boxes and it doesn't require installation of a special back box into the wall. Touch panel can be used as wired device connected to Ethernet and power supply or it can be used as wireless panel.



### Physical

Stainless steel enclosure  
 Dimensions 140 x 145 x 8 mm / 5.5" x 5.7" x 0.3"  
 Weight 0.5 kg / 1.1 lb

### Product code

CS0309-001