

airCUE-6X10



SPECIFICATIONS

Touch-screen display

Active matrix color LCD
Size 6.4" / 162 mm diagonal, aspect ratio 4:3
Resolution 640 x 480 pixels, 65 536 colors (High Color)
Resistive membrane touch overlay

Built-in sensors

Light sensor for automatic backlight dimming
Motion sensor for automatic switch on

Buttons

Power, Reset / Set factory default, 4x programmable

LED indicators

Power
Blue indicates power on
Green indicates external power supply
Red indicates charging of battery pack
Wi-Fi (yellow/green) indicates wireless network

Memory

64 MB RAM
CompactFlash Card min. 512 MB (upgradeable)

Software technologies

Admin Web
XPL Inside¹
WXL¹

Audio

Built-in microphone, built-in mono speaker

System communication

10/100 BaseT LAN, RJ-45 connector
Wireless network, IEEE 802.11b/g Wi-Fi 2.4 GHz

Power supply

24 VDC (+/- 20%), 11 W, power jack connector
Power over Ethernet (PoE), IEEE 802.3af compatible
Built-in Li-Ion rechargeable battery pack

Physical

Stainless steel – solid wood or plastic enclosure
Dimensions 216 x 145 x 25 mm / 8.5" x 5.7" x 1.0"
Weight 1.2 kg / 2.7 lb

Operating environment

Temperature 10° to 40° C
Humidity 10% to 90% non-condensing

¹. Upgradeable by firmware. For availability please contact manufacturer.

MAIN FEATURES

- 6.4" active matrix touch screen display 640 x 480 pixels
- 802.11b/g Wi-Fi 2-way wireless communication
- Wired Ethernet connection
- Power over Ethernet (PoE) IEEE 802.3af compatible
- Battery charging from Power over Ethernet
- Four programmable buttons
- Web server and Admin Web pages for setup and diagnostics
- Built-in microphone and speaker
- Built-in light and motion sensors
- Internal Li-Ion rechargeable battery pack
- Wireless, wired tabletop and wired wall mounting usage
- Tabletop and wall docking stations for charging

DESCRIPTION

The airCUE-6X10 is superior touch panel caters to the full integration of lifestyle as well as work style. It combines functionality such as multimedia integration, lighting automation, security monitoring, entertainment integration, and meeting & presentation control. Unleashed by Wi-Fi this classical beauty touch panel gives professional presenters and homeowners the wireless freedom that they love. From living room to garden, boardroom to break-room, anywhere there is wireless LAN, airCUE-6X10 puts them in control and keeps them connected to the world. The long battery life and quick charger keep them wireless with fewer pit stops. The 6.4" active matrix touch screen display offers resolution 640 x 480 pixels and it produces stunning high color images. Innovative design features like min. 512 MB of standard data storage provides a level of capability not available with other similar touch panels. Wired Ethernet connection provides easy network integration. The touch panel is equipped with Power over Ethernet (PoE) - technology enabling an Ethernet network cable to deliver both data and power. Fully compatible with CUE controllers, this touch panel provides the ultimate one-touch solution for meeting rooms, conference rooms, boardrooms and high-tech homes. Flexible tabletop or wall installation can be done using four types of accessories.

APPLICATIONS

- Commercial single-room applications
- Meeting rooms, conference rooms, boardrooms
- Commercial huge multi-room and multi-floor distributed systems
- Complete residential home automation
- High-tech homes
- High-end home theaters

STANDARD BOX CONTENTS

Touch panel
Stylus
Ethernet cable straight-through
Ethernet cable crossed-over
CUEadapter /30W incl. power cable
Cleaning tissue
CE Declaration, RoHS Declaration
Touch Panel Data Sheet
Cue System Connector Wiring Sheet
CUE Application CD

ORDER INFORMATION

Product codes

CS0305-001 wooden enclosure, white birch
CS0305-002 wooden enclosure, oak
CS0305-003 wooden enclosure, mahogany
CS0305-004 plastic enclosure, stardust black
CS0305-005 plastic enclosure, abrasive white



Other wooden enclosures are available on request.

ACCESSORIES FOR FLEXIBLE INSTALLATION

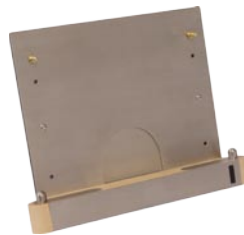
Flexible tabletop or wall installation can be done using four types of accessories. Each panel comes with a power supply, which makes it possible to quickly recharge the built-in battery. A more comfortable way of recharging is through the Tabletop Docking Station. The Wall Docking Station, designed for fix installation on the wall, allows the touch panel can be recharged at a most convenient place. If the panel is placed at any of the docking stations, it remains functional and can be used as a tabletop or a wall-installed touch panel. The Wall Mounting Adapter has been designed for fixed installation on the wall. It does not need any special back box built in the wall. It is installed with three screws above the standard European electrical wall box or directly above the cable outlet. Here the touch panel is fixed by means of four fixtures. The whole system is therefore not built into the wall, as is the case in classical built-in touch panels. Another piece of provided accessories is the Tabletop Stand, which is to be mounted to the back panel with two screws. Then the touch panel can be used as a classical wired or wireless tabletop panel. If Power over Ethernet (PoE) is used, only one cable leads to the panel.

For more details please see appropriate Product Cut Sheets.

airCUE-6X10 Tabletop Docking Station, CS0306



airCUE-6X10 Wall Docking Station, CS0307



airCUE-6X10 Tabletop Stand, CS0308



airCUE-6X10 Wall Mounting Adapter, CS0309

