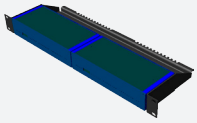


## ipCUE Rack Mounting Kit



The ipCUE Rack Mounting Kit provides simple solution for installing ipCUE controllers and rbaseCUE to the 19" rack. It allows install two half-rack sized ipCUEs or one full-sized ipCUE to single 19" unit rack space. All necessary accessories are supplied with the kit.

Stainless steel enclosure  
Dimensions Rack 19", 1 U  
Weight 1.3 kg / 2.9 lb  
Product code CS0251-MR

## IR Adapter /i



The IR Adapter /i is an infrared emitter used for controlling AV devices equipped with IR control capabilities. It is fastened on the receiver window of the AV device using a double-sided adhesive tape.

Connector 2-pin 3.5 mm  
Cable length 2 m / 6.6 ft  
Product Code CS0256

## Opto-Input Adapter /i



Any status indicator on the controlled device can be read using the Opto-Input Adapter /i photosensitive cell. The Opto-Input Adapter /i is fastened on the indicator using a double-sided adhesive tape.

Connector 2-pin 3.5 mm  
Cable length 2 m / 6.6 ft  
Product Code CS0257

## CUEwire Cable



The CUEwire Cable is used for CUEwire connection.

Connectors  
4-pin 5.08 mm, 4-pin 5.08 mm  
Product codes  
CA0140-P05 length 0.5 m / 1.6 ft  
CA0140-P30 length 3.0 m / 9.8 ft  
CA0140-PU user cable length

## CUEwire Splitter



The CUE wire Splitter is a device that enables connection up to 4 devices to one controller with a use of CUE wire.

Connectors  
6x 4-pin 5.08 mm  
1x 2-pin 5.08 mm  
Product code  
CS232

## Serial IO Cable /i



The Serial IO Cable allows system connectivity to controlled devices that are equipped with RS-232, RS-422 or RS-485 serial communications. The connector and pin description need to be specified. This information, as well as the communication protocol, can typically be found in the user manual of the controlled device. If the equipment cannot be found in our library, and the connector is not explicitly described in your order, the cable will be delivered without a connector.

Connectors  
5-pin 3.5 mm  
Output connector depends on device  
Product codes  
CA0180-P05 length 0.5 m / 1.6 ft  
CA0180-P30 length 3.0 m / 9.8 ft  
CA0180-PU user cable length

## Serial IO Cable DTE /i



The Serial IO Cable DTE /i allows system connectivity to controlled devices that are equipped with RS-232 serial communication.

Connectors  
5-pin 3.5 mm, DB-9-M  
Product codes  
CA0181-P05 length 0.5 m / 1.6 ft  
CA0181-P30 length 3.0 m / 9.8 ft  
CA0181-PU user cable length

## Serial IO Cable DCE /i



The Serial IO Cable DCE /i allows system connectivity to controlled devices that are equipped with RS-232 serial communication.

Connectors  
5-pin 3.5 mm, DB-9-F  
Product codes  
CA0182-P05 length 0.5 m / 1.6 ft  
CA0182-P30 length 3.0 m / 9.8 ft  
CA0182-PU user cable length

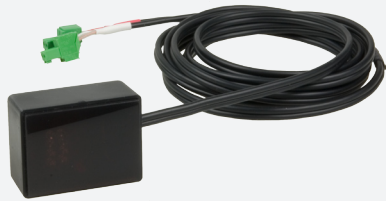
## CUEring Cable /i



The CUEring Cable /i is a data cable that enables communication between controllers and interfaces.

Connectors  
5-pin 3.5 mm, DB-9-male  
Product codes  
CA0170-P05 length 0.5 m / 1.6 ft  
CA0170-P30 length 3.0 m / 9.8 ft  
CA0170-PU user cable length

# IR Sprayer



## SPECIFICATIONS

### Connection

To controller's IR /serial output, 2-pin connector

### Power supply

5 VDC, 1 W, 2-pin connector

### Physical

Black plastic enclosure

### Dimensions

44 x 33 x 22 mm / 1.7" x 1.3" x 0.9"

Weight 0.1 kg / 0.2 lb

### Operating environment

Temperature 10° to 40° C

Humidity 10% to 90% non-condensing

## STANDARD BOX CONTENTS

IR Sprayer incl. cable and connectors

Double-sided adhesive tape

Warranty Conditions, CE Declaration, RoHS Declaration

Data Sheet, Cue System Connector Wiring Sheet

## ORDER INFORMATION

### Product codes

CS0295.001

IR Sprayer incl. cable

CS0299.001

IR Sprayer Wall Mounting Adapter  
incl. accessories

## MAIN FEATURES

- Controls multiple IR controllable devices
- Amplifies and emits infrared control signal
- Power supply 5 VDC directly from controller
- Compact and small black plastic enclosure
- Wall Mounting Adapter available

## DESCRIPTION

The IR Sprayer amplifies and emits infrared control signal from controller's IR / serial output. It allows control multiple IR controllable devices by single transmitting unit. The IR Sprayer is equipped with 2 m cable and two 2-pin connectors. White labeled connector serves for signal connection (IR / serial output on controller), red labeled connector is power supply and it can be connected to controller power output 5 VDC. In that case no additional power supply is required. The IR Sprayer can be simply fastened on the flat surface using a double-sided adhesive tape. For more flexible installation a Wall Mounting Adapter is available.

## APPLICATIONS

- Commercial single-room applications
- Huge multi-room and multi-floor distributed systems
- Home theater applications
- Complete residential home automation

## AVAILABLE ACCESSORIES

The IR Sprayer Wall Mounting Adapter allows flexible installation on the wall, ceiling, furniture, etc. and must be ordered separately using product code CS0299.001. The adapter is supplied incl. all necessary mounting accessories - screws, wall plugs, etc. The IR Sprayer is simply fastened to the adapter using a double-sided adhesive tape.

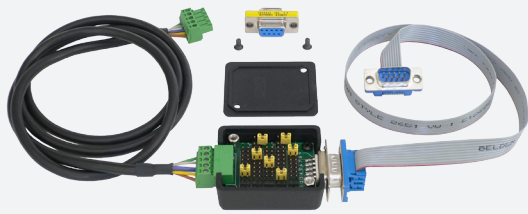


IR Sprayer installed on Wall Mounting Adapter



IR Sprayer Wall Mounting Adapter

# Universal Serial Cable Adapter



## SPECIFICATIONS

### Connection

Controller's serial port, 5-pin 3.5 mm connector  
Controlled device, DB -9-M connector

### Physical

Black plastic enclosure

#### Dimensions

44 x 33 x 22 mm / 1.7" x 1.3" x 0.9"

Weight 0.2 kg / 0.4 lb

### Operating environment

Temperature 10° to 40° C

Humidity 10% to 90% non-condensing

## STANDARD BOX CONTENTS

### Serial adapter

Cable to ipCUE (length 1 m)

Cable to controlled device (length 0.5 m)

DB-9-F to DB-9-M reduction

Warranty Conditions, CE Declaration, RoHS Declaration

Data Sheet, Cue System Connector Wiring Sheet

## ORDER INFORMATION

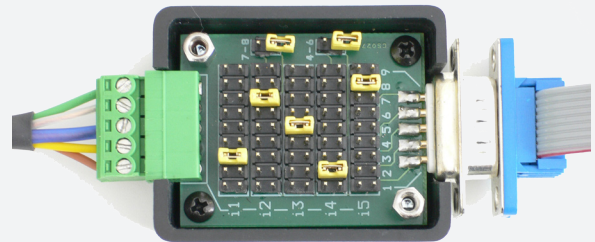
Product code CS0271

## MAIN FEATURES

- Allows simple change of serial cable pinout connection
- Perfect for serial connection testing and setup
- Small plastic enclosure
- Delivered with all necessary accessories

## DESCRIPTION

The Universal Serial Cable Adapter allows to connect serial controlled device equipped with any signal configuration on DB-9-F or DB-9-M connector. Cable pinout connection can be simply changed by jumpers. It is perfect solution for serial cable checking and setup. After setup the universal adapter can be replaced by standard serial cable.



## APPLICATIONS

- Commercial single-room applications
- Huge multi-room and multi-floor distributed systems
- Home theater applications
- Complete residential home automation