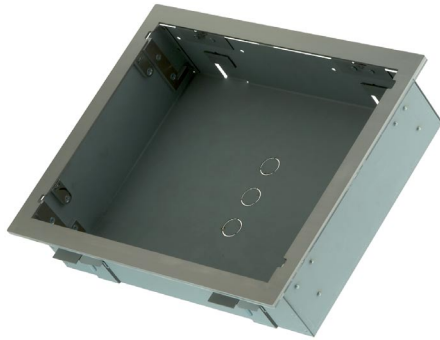


touchCUE-L /b Back Box



DESCRIPTION

The back box is an optional accessories for built-in touch panel and it provides a steel enclosure. The back box is designed for pre-construction applications and allows install touch panel to all types of wall as well as to the table. Box construction allows enough airflow for touch panel when installed in an enclosed wall. All necessary accessories is supplied with back box.

SPECIFICATIONS

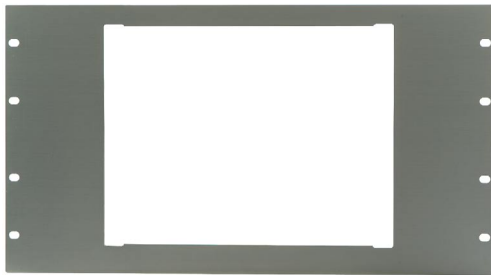
Physical

Stainless steel enclosure
Dimensions 323 x 282 x 83 mm / 12.7" x 11.1" x 3.3"
Weight 1.6 kg / 3.5 lb

ORDER INFORMATION

Product code CS0238-MB

touchCUE-L /b Rack Mount Panel



DESCRIPTION

The rack mount panel is an optional accessories for built-in touch panel and it provides simple solution for installing built-in touch panel to the 19" rack. Appropriate back box must be used.

SPECIFICATIONS

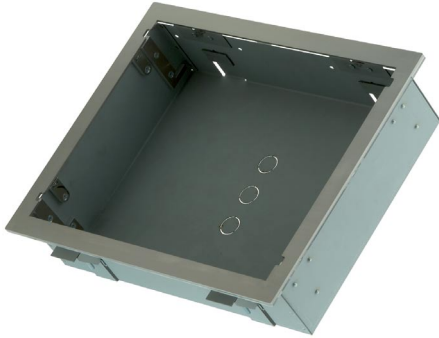
Physical

Stainless steel enclosure
Dimensions Rack 19", 6 U
Weight 1.7 kg / 3.8 lb

ORDER INFORMATION

Product code CS0238-MR

touchCUE-LV /b Back Box



DESCRIPTION

The back box is an optional accessories for built-in touch panel and it provides a steel enclosure. The back box is designed for pre-construction applications and allows install touch panel to all types of wall as well as to the table. Box construction allows enough airflow for touch panel when installed in an enclosed wall. All necessary accessories is supplied with back box.

SPECIFICATIONS

Physical

Stainless steel enclosure

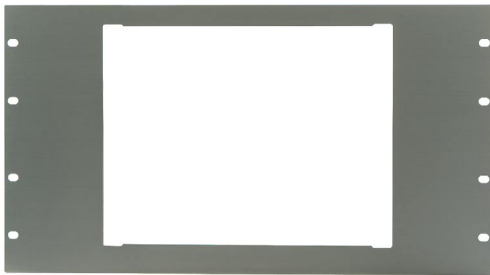
Dimensions 323 x 282 x 83 mm / 12.7" x 11.1" x 3.3"

Weight 1.6 kg / 3.5 lb

ORDER INFORMATION

Product code CS0238-MB

touchCUE-LV /b Rack Mount Panel



DESCRIPTION

The rack mount panel is an optional accessories for built-in touch panel and it provides simple solution for installing built-in touch panel to the 19" rack. Appropriate back box must be used.

SPECIFICATIONS

Physical

Stainless steel enclosure

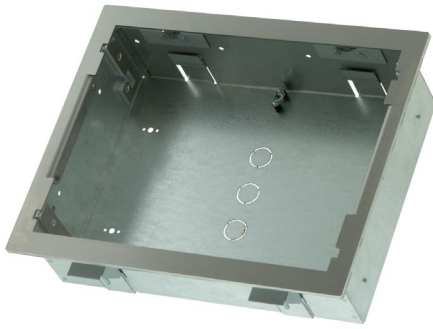
Dimensions Rack 19", 6 U

Weight 1.7 kg / 3.8 lb

ORDER INFORMATION

Product code CS0238-MR

touchCUE-M /b Back Box



DESCRIPTION

The back box is an optional accessories for built-in touch panel and it provides a steel enclosure. The back box is designed for pre-construction applications and allows install touch panel to all types of wall as well as to the table. Box construction allows enough airflow for touch panel when installed in an enclosed wall. All necessary accessories is supplied with back box.

SPECIFICATIONS

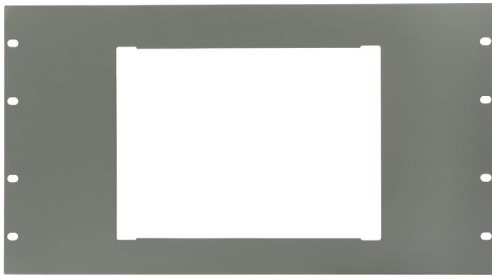
Physical

Stainless steel enclosure
Dimensions 298 x 251 x 83 mm / 11.7" x 9.9" x 3.3"
Weight 1.5 kg / 3.3 lb

ORDER INFORMATION

Product code CS0239-MB

touchCUE-M /b Rack Mount Panel



DESCRIPTION

The rack mount panel is an optional accessories for built-in touch panel and it provides simple solution for installing built-in touch panel to the 19" rack. Appropriate back box must be used.

SPECIFICATIONS

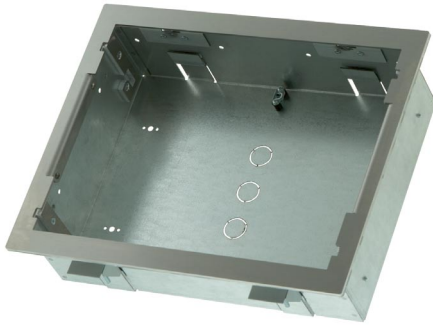
Physical

Stainless steel enclosure
Dimensions Rack 19", 6 U
Weight 1.9 kg / 4.2 lb

ORDER INFORMATION

Product code CS0239-MR

touchCUE-MV /b Back Box



DESCRIPTION

The back box is an optional accessories for built-in touch panel and it provides a steel enclosure. The back box is designed for pre-construction applications and allows install touch panel to all types of wall as well as to the table. Box construction allows enough airflow for touch panel when installed in an enclosed wall. All necessary accessories is supplied with back box.

SPECIFICATIONS

Physical

Stainless steel enclosure

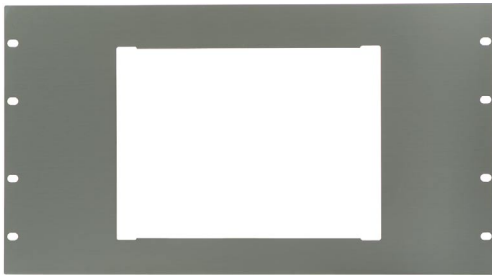
Dimensions 298 x 251 x 83 mm / 11.7" x 9.9" x 3.3"

Weight 1.5 kg / 3.3 lb

ORDER INFORMATION

Product code CS0239-MB

touchCUE-MV /b Rack Mount Panel



DESCRIPTION

The rack mount panel is an optional accessories for built-in touch panel and it provides simple solution for installing built-in touch panel to the 19" rack. Appropriate back box must be used.

SPECIFICATIONS

Physical

Stainless steel enclosure

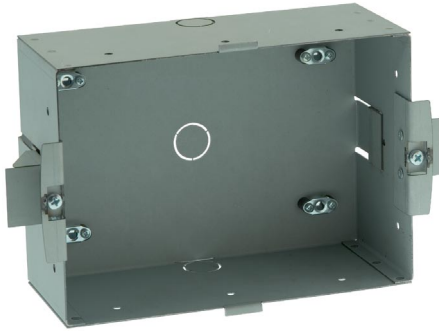
Dimensions Rack 19", 6 U

Weight 1.9 kg / 4.2 lb

ORDER INFORMATION

Product code CS0239-MR

touchCUE-S /b Back Box



DESCRIPTION

The back box is an optional accessories for built-in touch panel and it provides a steel enclosure. The back box is designed for pre-construction applications and allows install touch panel to all types of wall as well as to the table. Box construction allows enough airflow for touch panel when installed in an enclosed wall. All necessary accessories is supplied with back box.

SPECIFICATIONS

Physical

Stainless steel enclosure

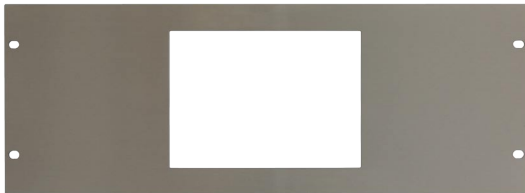
Dimensions 212 x 136 x 83 mm / 8.4" x 5.4" x 3.3"

Weight 0.6 kg / 1.3 lb

ORDER INFORMATION

Product code CS0241-MB

touchCUE-S /b Rack Mount Panel



DESCRIPTION

The rack mount panel is an optional accessories for built-in touch panel and it provides simple solution for installing built-in touch panel to the 19" rack. Appropriate back box must be used.

SPECIFICATIONS

Physical

Stainless steel enclosure

Dimensions Rack 19", 4 U

Weight 1.5 kg / 3.3 lb

ORDER INFORMATION

Product code CS0241-MR