



# MCE 10

## CONDENSER- MIKROPHONE

**beyerdynamic**

### FEATURES

- Wide range frequency response
- Hypercardioid polar response provides excellent gain before feedback
- Extremely small size
- Easily interfaces with wireless body-pack transmitters
- Lavalier or instrument mounting capabilities

### DESCRIPTION

The MCE 10 is a hypercardioid clip-on microphone designed for unobtrusive miking of speech and instruments. It has many uses in broadcast, theatre or for presentation purposes. The MCE 10 is available as various models for cable bound applications or for interfacing with wireless systems.

The MCE 10 condenser microphone has a smooth and wide frequency response and a hypercardioid polar pattern ensures high gain before feedback when in stage applications or public address systems.

### TECHNICAL SPECIFICATIONS

#### MCE 10.14 (in conjunction with CV 15 PV N(C)L)

Operating principle	Pressure-gradient microphone
Frequency response	40 - 20,000 Hz
Open circuit voltage at 1 kHz (0 dBV $\hat{=}$ 1V/Pa)	30 mV/Pa $\hat{=}$ -30 dBV
Nominal impedance	$\leq$ 200 $\Omega$
Load impedance	$\geq$ 1 k $\Omega$
S/N ratio	60 dB
A-weighted equivalent SPL	approx. 26 dB
Max. SPL at 1 kHz for k = 1%	120 dB
Weight (without cable and plug)	15 g

#### Germany

Theresienstr. 8  
74072 Heilbronn  
Tel. (071 31) 6 17-0  
Fax (071 31) 6 04 59  
beyerdynamic@t-online.de  
www.beyerdynamic.de

#### United States

56 Central Ave.  
Farmingdale, NY 11735  
Tel. (516) 293-3200  
Fax (516) 293-3288  
salesUSA@beyerdynamic.com  
www.beyerdynamic.com

#### Great Britain

17 Albert Drive  
Burgess Hill RH15 9TN  
Tel. (01444) 258 258  
Fax (01444) 258 444  
sales@beyerdynamic.co.uk  
www.beyerdynamic.com

#### France

7, Rue Labie  
F-75017 Paris  
Tel. 0144.09.93.93  
Fax 0144.09.82.33  
beyerd\_france@compuserve.com  
www.beyerdynamic.com

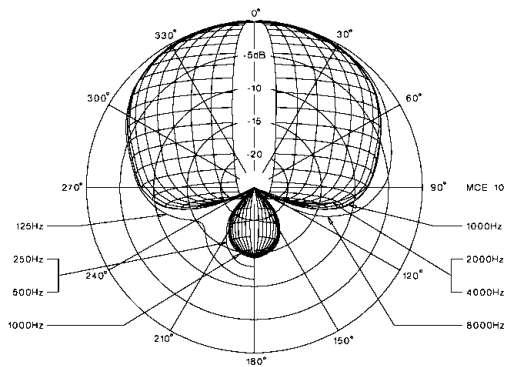
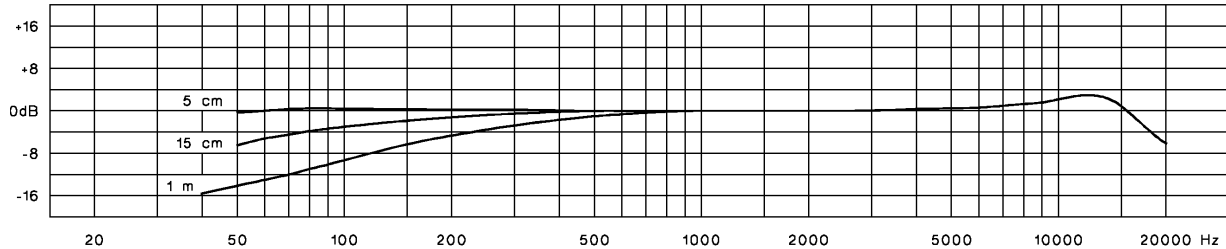
## FREQUENCY RESPONSE & POLAR PATTERN

This frequency response curve and polar pattern (measuring distance  $\pm 2,5$  dB) correspond to typical production run specifications for this microphone.

Frequency response  $\pm 2.5$  dB

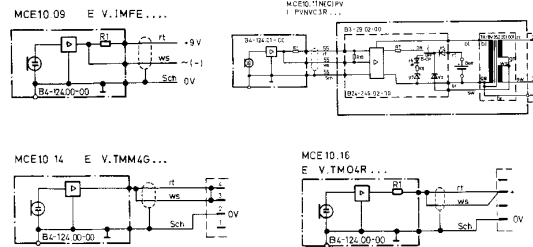
0 dB  $\hat{=}$  20 mV/Pa

MCE 10

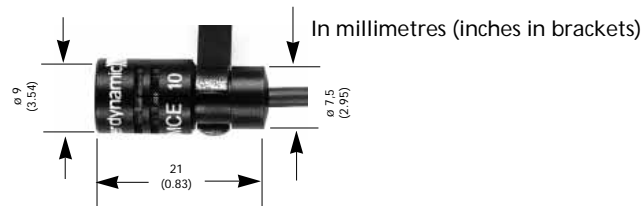


## WIRING DIAGRAMS

Positive pressure produces positive voltage on red cable lead (+).



## DIMENSIONS



## MODELS

<b>MCE 10.11 N(C)PV</b>	with power supply, choice between battery supply (IEC 4 F 16, 5.6 V) or phantom supply 8 - 52 V	Order # 401.919
<b>MCE 10.14</b>	with 4-pin Binder-plug for connection to beyerdynamic beltpack transmitters TS 44, TS 85, TS 190, TS 900 and handheld transmitters S 85, S 185 S 700 with adaptor AH 185	Order # 400.564
<b>MCE 10.14 S</b>	as above, but with On/Off-switch	Order # 401.978
<b>MCE 10.15 Set</b>	with 4-pin Binder-plug and power supply CV 15 PV N(C)-L for wired application for connection to amplifiers, mixing consoles etc. with phantom power supply 8 - 52 V	Order # 441.090
<b>MCE 10.16</b>	with 4-pin Lemosa-plug for connection to beyerdynamic beltpack transmitters TS P and TS 600	Order # 420.379
<b>MCE 10.17</b>	with 2-pin Lemosa-plug for connection to beyerdynamic beltpack transmitter TS 900/1	Order # 441.546

## SUPPLIED ACCESSORIES

• MKV 10/1 Microphone clip	Order # 402.451
• WS 10 Windshield	Order # 402.990
• ZWS 10 Polyurethane foam windshield	Order # 403.008
• Black padded zipper bag	

## OPTIONAL ACCESSORIES

• MTH 5 Microphone holder for flute	Order # 275.298
• MGH 5 Microphone holder for violin	Order # 219.037

Photos are non contractual. Contents subject to change without notice. Printed in Germany.